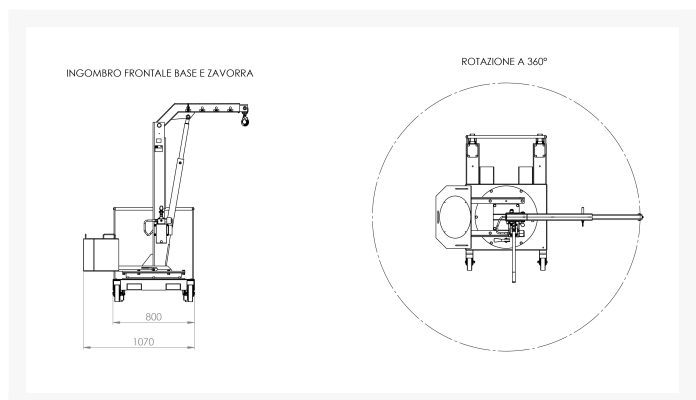
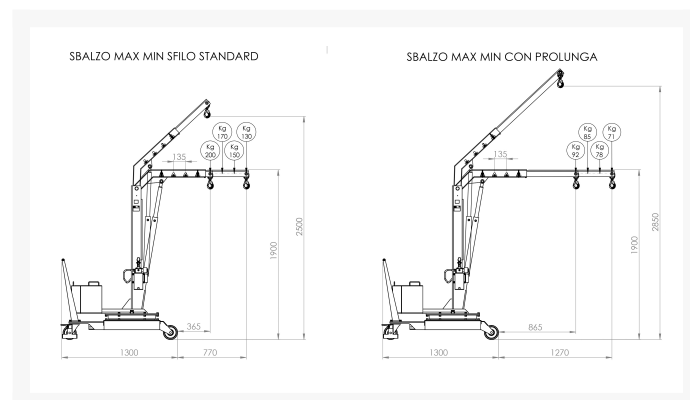
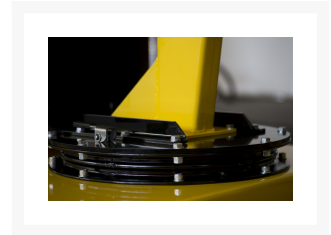
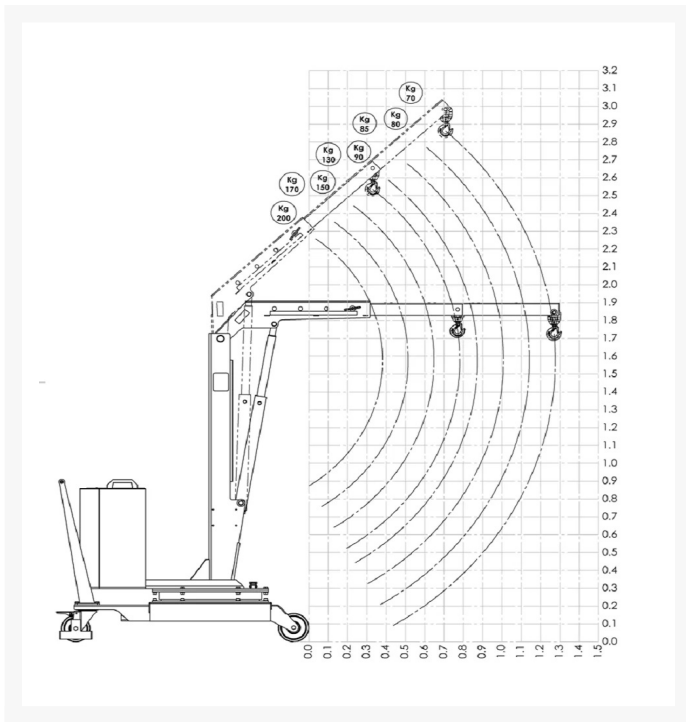


360° rotating mobile crane with counterweight pump actuated

Immagini Prodotto





Descrizione

360° rotating mobile crane with counterweight, designed for moving molds, machinery, bulky spare parts and any other products which need to be used on perimeter fences or small clearing with a difficult access (lathes, mills, molding plants, electro-discharge machines, numerical control machines).

Being only 800 mm wide, it can be used in small aisles.

It can easily replace fixed structures (fixed crane, jib crane, travelling crane) granting an easier handling. Suitable to carry weights up to 200 kg. A double acting manual pump, combined with a big cylinder reduces efficiently the operator's effort.

The jib can be extended in 4 positions, with decreasing capacity.

Frame: the base is made of steel, with kiln dried finishing. It has 2 wedges for lifting by forklift (the crane can thus be safely lifted and transported on a long streak by a forklift)

Counterweight: steel construction, filled with concrete; on the counterweight 2 handles make the rotation easier.

Boom: 4 position telescopic boom, at decreasing capacity. A boom extension is also available for a maximum height of 1270 mm

360° rotating hook with safety lock

A **Double acting manual pump** let the operator rise the load with a minimum effort.

2 swivel casters with brake and footguards; 2 casters fixed on a support which is integral part of the frame

Assembly push handle

The load is raised through a direct operation on the double acting pump. The effort required is minimum.

The load is lowered, by turning the knob; the lowering speed is adjustable by opening / closing the valve through the knob.

A safety valve prevents the load from falling, in case of hydraulic system failure

No third party certification requested; no third party periodic checks requested; no licence requested.

Weight: 400 kg

Capacity 200 kg

Maximum pressure: 160 bar

Lift speed 30 sec

Lowering speed 15 sec

Epoxy powder painted

Compliant to CE rules

Informazioni Aggiuntive

Cod. Prod.	GRUGR02
GTIN/EAN	8053853157539
Fornito	Montato - Pronto all'uso
Weight kg	400.0000
Load Capacity	200
Type of Wheel:	Poliammide (Nylon)
Colour	Yellow RAL028
Manufacturer	Carmeccanica
Made in	Italia
Warranty	Legale
Conformità	CE
Lead Time	15 giorni

Additional Options

Prolunga braccio a 1500 mm portata ridotta a 130 kg

Prolunga braccio a 1500 mm portata ridotta a 130 kg