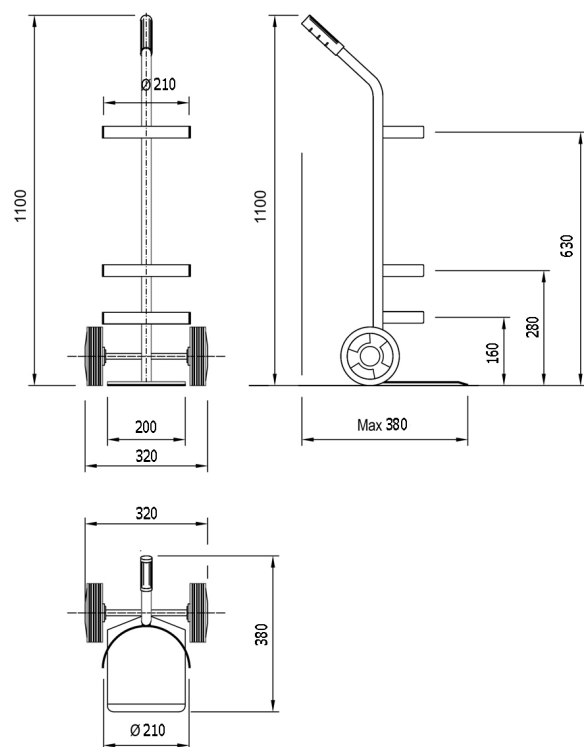


# Cylinder truck 5/7/14 lt

## Immagini Prodotto





## Descrizione

Single cylinder truck for Ø 210 cylinder, capacity lt. 5/7/14.

Designed for a professional user, ideal for both industrial and hospital use.

The containment hoops at different heights and the strap with buckle ensure greater stability.

2 Injection rubber wheel Ø 150

Polypropylene centre, hub on smooth bushing

Hand track suitable for stoneware, asphalt, concrete and resin.

**Sizes** 320x380x1100 mm

**Round cylinder holders height** mm 160 - 280 - 630

**Noseplate sizes** 200x250 mm

**Weight** Kg.4

**Capacity** 60 Kg

Belt with 70 cm blue buckle in the second containment circle..

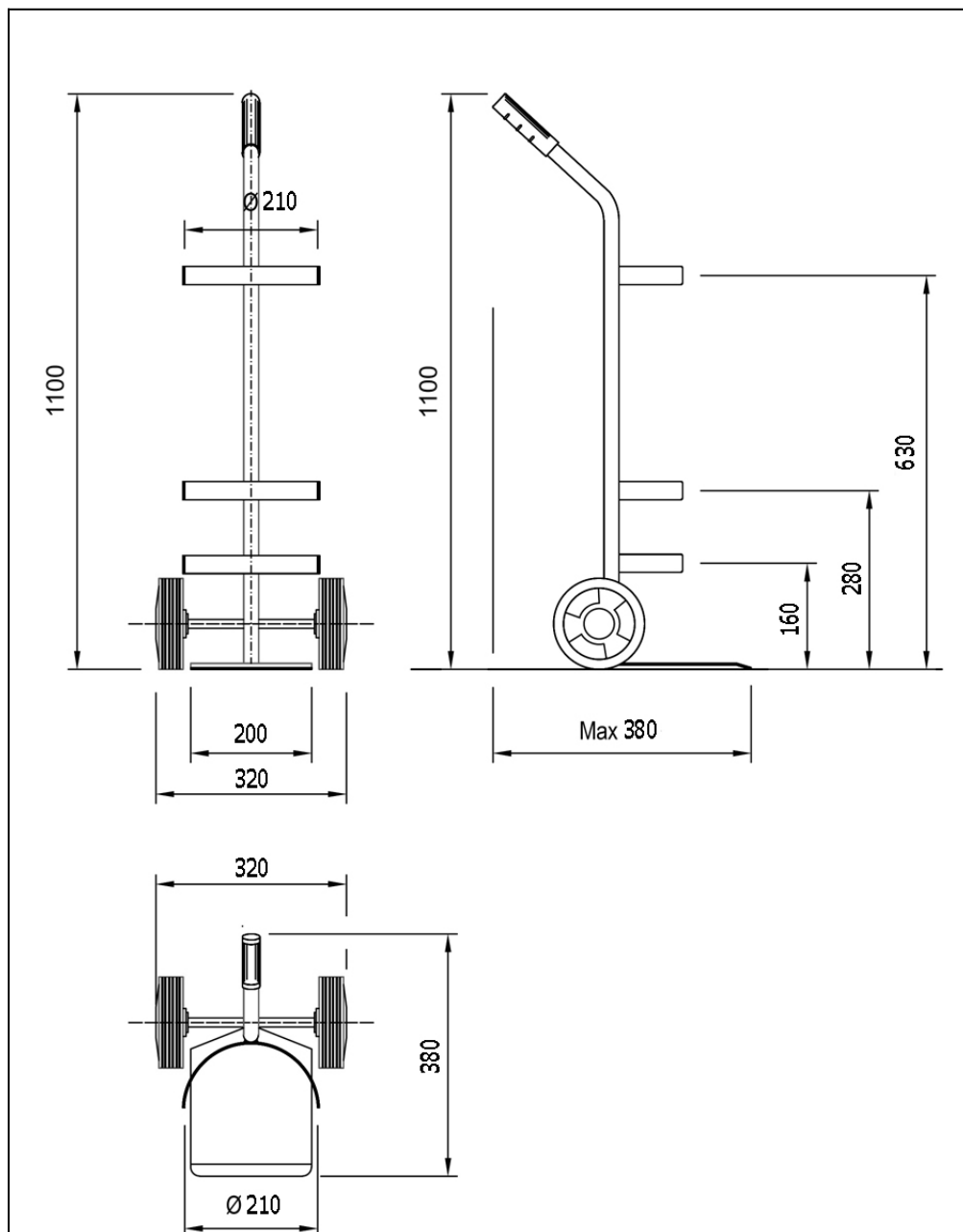
Non-toxic rubber knobs.

Ergonomic handle.

Tubular, plate and electro-welded rims.

EPOXY POWDERS COATED

COMPLIES WITH CE STANDARDS



# Informazioni Aggiuntive

Cod. Prod.	ART032BA
GTIN/EAN	8053853157614
Supplied	Fully assembled
Weight kg	4.0000
Plate	250x200
Load Capacity Kg	60
Casters diameter mm	150
Type of Wheel:	Nylon
Colour	White
Manufacturer	Carmeccanica
Made in	Italia
Warranty duration	5 Years
Conformity	CE
Lead Time	15 giorni