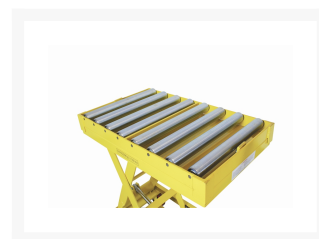


# Electric mobile lift table with roller conveyor Kg. 450

## Immagini Prodotto



## Descrizione

Base frame and platform made of steel  
Lift / lower controls on the control handle  
Raise speed (unloaded) 94 mm/sec  
Raise speed (loaded) 65 mm/sec  
Lower speed (unloaded) 74 mm/sec  
Lower speed (loaded) 98 mm/sec  
Platform 815x500  
Roller conveyor screwed to the platform  
100 working cycle  
Lift motor 24 V 800W  
Batteries included: 2X12V 24Ah  
Charger 24V 4A  
Charging time TIME 6-8 HOURS  
Smooth plate loading platform  
Foot operated hydraulic lift pump  
Smooth rate of lowering adjustable through the release handle

Polyurethane wheels rolling easily on a roller bearing - 2 wheels with parking brake  
ACRILIC POWDER PAINTING  
COMPLIANT TO CE RULES

COD	A	B	C	D	E	F	Wheels ø	Capacity	Weight
PC500ER	970	1305	1010	440	1025	520	150	450	199

## Informazioni Aggiuntive

Cod. Prod.	PC500ER
GTIN/EAN	8053853155559
Fornito	Montato - Pronto all'uso
Weight kg	199.0000
Load Capacity	450
Colour	Yellow RAL028
Manufacturer	Carmeccanica
Warranty	2 Years
Conformità	CE