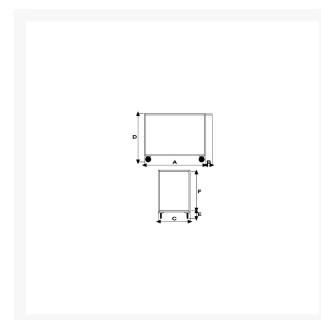
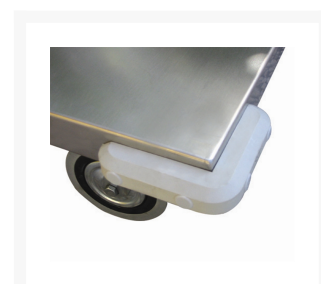


Stock cart 2 high capacity trays with a mm 30 perimeter lip, deadman brake

Immagini Prodotto



Descrizione

Sizes mm 600x900x830h

Trays plate thickness 20/10 with a 30 mm perimeter lip

2 fixed and 2 swivel casters, 2 with brake Ø140

Weight Kg. 29

Capacity Kg. 300

ACRILIC POWDER PAINTING

COMPLIANT TO CE RULES

| ART | A | B | C | D | E | F |
|---------|-----|-----|-----|-----|-----|-----|
| 041VFR1 | 900 | 150 | 600 | 895 | 200 | 630 |

Informazioni Aggiuntive

| | |
|----------------------|--------------------------|
| Cod. Prod. | ART041VFR1 |
| GTIN/EAN | 8053853151889 |
| Fornito | Montato - Pronto all'uso |
| Weight kg | 29.0000 |
| Load Capacity | 300 |
| Diametro Ruota in mm | 150 |
| Type of Wheel: | Rubber |
| Colour | Blu RAL5015 |
| Manufacturer | Carmeccanica |
| Made in | Italia |
| Warranty | 5 Years |
| Conformità | CE |

Additional Options

| | |
|---------------------------|--|
| Paracolpi angolari | 2 paracolpi angolari in gomma grigia antitraccia |
| | 4 paracolpi angolari in gomma grigia antitraccia |
| Antivibrante | Applicazione antivibrante |